

CITY OF ABBEVILLE

PHASE II MS4 2023 ANNUAL REPORT



In compliance with the conditions of LPDES general permit LAR041027 regulating discharges from Small Municipal Separate Storm Sewer Systems authorizing discharge under the Louisiana Pollutant Discharge Elimination System

**Prepared By:
C. H. Fenstermaker & Associates, L.L.C.
Lafayette, Louisiana**



Table of Contents

MS4 2023 Annual Report

Section	Page No.
A. General Information.....	1
B. SWMP Modifications and Additional Information.....	1
C. Stormwater Management Program Status.....	2
D. Certification.....	13

Table of Attachments

Attachment A	Stormwater Brochure
Attachment B	Environmental Education Page
Attachment C	Hazardous Waste Pickup Day Promotion
Attachment D	Citizen Complaint Hotline
Attachment E	Community Clean-up Day
Attachment F	Outfalls Map
Attachment G	Sanitary Sewer System Repairs
Attachment H	Sucre Circle Drainage Clean-up
Attachment I	Training Sign-In Sheets
Attachment J	Building Permits
Attachment K	Ordinance on Stormwater, Erosion, and Sediment Control; Demolition; Landscape

Small MS4 Annual Report Form

Please refer to the attached instructions as you prepare your annual report.

A. General Information

Name of MS4: City of Abbeville

Contact Name: Chris Gautreaux, Public Works Director

Telephone Number: 337-893-8406 Email Address: cgautreaux@cityofabbeville.net

Annual Report Period: January 1, 2023 through December 31, 2023

B. SWMP Modifications and Additional Information. Attach a written explanation if you check "yes" to any of the following statements.

- | | | |
|---|---|--|
| 1. Changes have been made or are proposed to the SWMP since the last annual report. | YES <input checked="" type="checkbox"/> | NO <input type="checkbox"/> |
| 2. The MS4 area has expanded through the annexation of lands or the urbanized area has expanded based on the most recent US Census. | YES <input type="checkbox"/> | NO <input checked="" type="checkbox"/> |
| 3. The MS4 discharges directly to an impaired water (i.e. Category 5 on the Integrated Report). | YES <input type="checkbox"/> | NO <input checked="" type="checkbox"/> |
| 4. The MS4 discharges directly to water for which a TMDL has been established. | YES <input type="checkbox"/> | NO <input checked="" type="checkbox"/> |
| 5. A TMDL has provided a Waste Load Allocation (WLA) to the MS4. | YES <input type="checkbox"/> | NO <input checked="" type="checkbox"/> |
| 6. The MS4 has conducted analytical monitoring of stormwater quality. | YES <input type="checkbox"/> | NO <input checked="" type="checkbox"/> |
| 7. The MS4 is relying on another government entity to satisfy some permit obligations. | YES <input type="checkbox"/> | NO <input checked="" type="checkbox"/> |

C. Stormwater Management Program Status. Provide the status of every BMP and measurable goal in your SWMP as described in the instructions

TABLE 1

Minimum Control Measures	BMP	Measurable Goal (steps to measure progress)	New or Revised	Start Date	Implementation Status/ Frequency/ Achievement Date (Completed, in progress, not started)	Future Plans
Public Education and Outreach	The City of Abbeville will develop an educational outreach program geared to educate school aged children	a. In the first year of being issued the General Permit, the City will focus on program organization and on the production of the required educational pamphlets and brochures. b. In year 2- 3 visits to area schools and outreach to local School Boards to coordinate cooperative educational opportunities		2019	a. In progress, the city developed a brochure using materials from the EPA. (See Attachment A) b. Not Started	a. Update brochure to be school focused. b. Coordinate annually with one school to display brochure
Public Education and Outreach	The City of Abbeville will prepare pamphlets and educational booklets to be given to developers at the time of the issuance of all building permits. These pamphlets and booklets will also be accessible to the public in City Hall and other public buildings	In year 3, educational products meeting EPA requirements, within the limitations of the budget, will also be pursued and made available at City Hall and other public buildings.		2019	a. In progress, brochure completed (see Attachment A); however, it has not been made available at public buildings	In 2024, Pin brochure in City Hall
Public Education and Outreach	The City of Abbeville will post on their website pertinent educational information concerning MS4 pollution abatement. The City of Abbeville will develop and maintain an "environmental education page" on its web site, seeking to provide a variety of items addressing water	a. In year 2 - 5, the City will continue to develop an environmental education page of its web site and populate it with relevant items. b. the City will add items to its environmental education page as they become available.		2019	a. In progress, the city put on it's a website a "what is stormwater" section explaining what actions can be	Ongoing, update site with relevant information and updated SWMP

	quality, storm water management and erosion control issues. The City will also establish, on its web site, direct links to other sources of relevant information				done by the public and the effects of pollution. Also, it has a link to its SWMP (See Attachment B) b. In progress	
Public Education and Outreach	Proper disposal of household hazardous waste	Post on social media to spread the word of the Vermilion Parish Hazardous Waste Pickup Day.		2019	In progress, post information regarding the event on Facebook. (See Attachment C)	Continue to post information on social media regarding the event.
Public Involvement and Participation	Propose amendments to the City's Zoning Ordinance and Subdivision Regulations to address construction site runoff control and post-construction runoff control, the City Council will conduct at least one public hearing. At this session, experts will discuss the problems and the public will explore approaches to effective runoff management.	In year 1, the City will hold a discussion of the proposed amendments at a public meeting and at least one public hearing on the proposed amendments.	X	2019	Revised. Not started. This BMP will be removed from the SWMP as it is not currently feasible and will be replaced with an ordinance reviewal BMP in the new SWMP.	Replace BMP.
Public Involvement and Participation	The City Council will hold several public work sessions to consider and refine proposed language for construction site runoff control requirements in the Zoning Ordinance and Subdivision Regulations.	In year 2 - 3, the City will hold a discussion of the proposed amendments at a public meeting and at least one public hearing on the proposed amendments.	X	2019	Not started. This BMP will be removed from the SWMP as it is not currently feasible and will be replaced with an ordinance reviewal BMP in the new SWMP.	Replace BMP.
Public Involvement and Participation	The City Council will hold public hearings to consider proposed amendments to the Zoning Ordinance and Subdivision Regulations related to post-	In year 1 the City will utilize its online website to allow citizens to directly communicate storm water related issues with a tracking system.		2019	In progress, the city has an ordinance complaint hotline available on the	Continue to collect and respond to complaints.

	construction runoff control.				website. (See Attachment D) No stormwater related complaints were reported.	
Public Involvement and Participation	The City will initiate an on-going program of catch basin stenciling, with the objective of stenciling drainage facilities until all basins in City have been stenciled.	In year 2, the City will institute the stenciling maintenance program in conjunction with routine catch basin cleaning. This will become an on-going operation.	X	2019	Revised. Not started. This BMP is not viable and will be replaced with an ordinance reviewal BMP in the new SWMP.	Replace BMP.
Public Involvement and Participation	The City will initiate a stencil maintenance program where City staff is instructed to inspect catch basin stenciling as needed.	In year 3-5, the City will continue the catch basin stenciling program which will target the stenciling of between 100 and 200 basins.	X	2019	Revised. Not started. This BMP is not viable and will be replaced with an ordinance reviewal BMP in the new SWMP.	Replace BMP.
Public Involvement and Participation	Community Cleanup day.	Post on social media to spread the word of the Community Cleanup day. Actively engage in cleanup.		2019	In progress. Community Cleanup October 28, 2023: Removed 120 tires and 10 tons of trash all properly disposed at VPPJ Solid Waste Facility (See Attachment E)	Continue to post information on social media regarding the event and provide support and engagement.

Illicit Discharge Detection and Elimination	Year One: Map of Municipal Separate Storm Sewer System Outfalls: The City of Abbeville will prepare a map of its storm water system and will work with their Engineers and volunteers to update that map. This will be completed to meet EPA requirements and will show all known outfall points and identify all receiving waters. This map will be based on existing City maps, City provided as-built plans, digital plans provided by developers, as well as "on the ground" surveys. Year one as part of the periodic storm water outfall inspections, employees will document on a city map, outfalls not currently identified. This will continue year to year.	Year One through Five: Complete Map of Storm Sewer System: An updated map of the City's Map of Municipal Separate Storm Sewer System Outfalls will be completed as funds allow.		2019	Completed. Map is completed. (See Attachment F)	Update when future outfalls are installed or discovered.
Illicit Discharge Detection and Elimination	Year Two: Map Updating: The City will update this map periodically based on local permits, and field surveillance. Developers of subdivisions will be asked to provide plans in digital (CAD) format which can be readily integrated into the City's Map of Municipal Separate Storm Sewer System Outfalls. This will continue year one through year five.	Year Two: Map Update: The City will update the Municipal Separate Storm Sewer System Map annually based on local permits and state issued storm water permits. Developers will be asked to provide plans in digital (CAD) format which can be readily integrated into the City's Municipal Separate Storm Sewer System Map.	X	2019	Revised, ongoing. The map will be updated with any new installed or discovered discharges, however cad supplied drawing will not be input into the map.	Ongoing, continue to update outfalls map.
Illicit Discharge Detection and Elimination	Year One: Discharge Ordinance: The City, working with legal counsel, will review, and revise as necessary their current ordinance making it illegal to discharge non-storm waste into any storm sewer system in the City, including the municipal storm sewer system. The ordinance will include enforcement and fines as provided under State law.	Year One: Investigate and Revise current Non-Storm Water Discharge Ordinance: In Year 3 of the permit period the City will adopt a revised ordinance prohibiting the discharge of non-storm water waste into the storm sewer system, along with appropriate enforcement mechanisms.	X	2019	Revised. Not started. This BMP will be removed from the SWMP as it is not currently feasible and will be replaced with an ordinance reviewal BMP in the new SWMP.	Replace BMP.

Illicit Discharge Detection and Elimination	Year One through Five: Monitor System Outfalls: While the City is not aware of any inappropriate connections to its municipal storm sewer system, the City periodically smoke tests the City's sanitary sewer system to note any cross connections with the separate storm sewer systems. These cross connections are repaired by City forces or under contract.	Complete smoke testing of 5 streets every 3 years, and fix the leaks detected during the non-testing years.	X	2019	Revised to: "Smoke test the sewer system when funds are available and fix the leaks determined to cause significant harm to the MS4."In progress, the leaks detected in 2022 were fixed in 2023. (see Attachment G)	In 2024, Continue to fix the leaks detected.
Illicit Discharge Detection and Elimination	Current Practice: Visual Monitoring: Visual monitoring will include periodic dry weather examination to identify non-storm based flows. The discharge points will be visually monitored each year. Additionally, the City will educate the public to assist with illicit and/or illegal dumping and encourage public to report thereby allowing City to focus on real time illicit discharges.	Current Practice: Outfall Monitoring: The City will attempt to visually inspect the outfalls of The City of Abbeville's storm sewer system, beginning with those in the industrial and commercial districts. At a minimum, monitoring will include visual observations both in dry and wet weather. In addition, citizens will be encouraged to report unusual discharges whenever they are observed. City Public Works Director will develop an inspection form to be completed at each inspection.		2019	In progress, the City maintains a complaint hotline. 4 complaints were received. (see Attachment D).	In 2024, begin to perform drone survey of outfalls.
Illicit Discharge Detection and Elimination	Current Practice: Elimination of Illicit Discharges: If monitoring or other information identifies an illicit discharge, the City will take appropriate steps to locate the source and terminate the discharge.	Terminate discharge on an as-needed basis.		2019	In progress, the City performed numerous cleanups of trash in the stormwater system. (see Attachment H)	Perform action as needed.
Illicit Discharge Detection and Elimination	The City will provide training for public employees on the identification and elimination of illicit	Education Program for Public Employees: The City will present an informal education program to all		2019	In progress, see training sign-in sheet. 3	Continue performing training.

	discharges from municipal operation.	public employees focused on the detection and prevention of illicit discharges into the storm sewer system.			Trainings were performed and Public Works Director received MS4 training.(See Attachment I)	
Illicit Discharge Detection and Elimination	Year Three: Catch Basin Stenciling: As described under minimum control Measure No. 2, the City of Abbeville plans to continue the imitative started by the Boys Scouts of catch basin stenciling that discourages dumping of pollutants into storm water catch basins. This program will seek to involve various community groups. The goal is to stencil remaining catch basins, approximately 150 and to maintain stencils already applied. Note: A stenciling project was completed by a local Boy Scout Eagle Badge project.	a. Year Three: Catch Basin Stenciling: As described in Minimum Control Measure No. 2 the City of Abbeville will initiate the catch basin stenciling effort in Year 2 of the permit period. It is expected that 100 to 200 catch basins will be stenciled until all have been stenciled. Local groups and service clubs will be encouraged to take part in the program and ensure that the stenciling is updated annually or as needed. Stenciling will also be checked and updated as part of ongoing catch basin cleaning efforts. b. Complete the Catch Basin stenciling that discourages dumping of pollutants into storm water catch basins. Project will engage a local community group to fund and place the stenciling.	X	2019	Revised. Not started. This BMP is not viable and will be replaced with tributary signage BMP in the new SWMP.	Replace BMP.
Illicit Discharge Detection and Elimination	Current Practice: Reporting of Illicit Discharges: Noted illicit discharges (if any) will be documented in the annual report to be submitted through this plan to Regulatory Agencies (LDEQ). The report will include a description of the City's monitoring efforts, the results of such efforts, corrective actions taken, and the disposition of any illicit discharges identified.	Current Practice: Reporting of Illicit Discharges: Illicit discharges (if any) will be reported in the annual report to be submitted through this program. The report will include a description of the City's monitoring efforts, the results of such efforts, corrective actions taken, and the disposition of any illicit discharges identified.		2019	In progress, the city has an ordinance complaint hotline available on the website. 4 complaints were received. (See Attachment D)	Continue to collect and respond to complaints.

Construction Site Storm Water Runoff Control	Current Practice: The City will continue to include in its building permit process an application for SWWP. City staff will review the SWPPP for compliance with the ordinance, the permit office shall accept the plan and issue a building permit.	Current Practice: Identification of construction sites: The City has incorporated into its application packets for Site Plan Approval and Subdivision Approval a sample SWPPP on which the applicant must delineate the area or areas on the development site to be disturbed by construction activities, and to estimate the size(s) of such areas. City staff will review this information and if it is judged to be satisfactory, issue the building permit or other relevant approvals.		2019	In Progress, the city requires an Erosion/ Sediment Control plan for developments larger than 1 acre. 6 Commercial developments were permitted in 2023. (See Attachment J)	Continue practice.
Construction Site Storm Water Runoff Control	Year One: City's inspectors and the staff will be instructed to be observant of evidence that storm water and erosion control measures are either not installed properly or are not being maintained properly. When such evidence (eroding soils, turbid waters, or other indicators) is observed, staff will be instructed to immediately notify the Contractor or a designated representative and meet to correct all noted deficiencies. The city's public works director will instruct employees the proper means of reporting incidents	Current Practice: Notification of storm water and erosion problems: The City has instructed its staff to be aware of signs of storm water and erosion control problems or evidence of noncompliance with applicable permits. The City will continue to instruct its employees of this criteria through its regular staff meetings. The Public Works Director will develop an inspection/reporting form for documentation.		2019	In progress, no evidence of noncompliance reported.	Continue practice.

Construction Site Storm Water Runoff Control	The City will continue to review its policies, ordinances, and other regulations as they pertain to effective storm water and erosion control on construction sites to ensure compliance of this measure is kept up to date as it relates to construction activities.	<p>a. Year Two: Review of Policies: The City will have completed the review of its planning, zoning, subdivision and other regulations and specifications for effectiveness in controlling pollutants and excessive discharges into the storm water system.</p> <p>b. Year Two Through Five: The City will formulate changes to its Zoning Ordinance and Subdivision Regulations to incorporate requirements for controlling erosion and sediment, and removal/disposal of construction waste, on all construction sites meeting the one acre and five acre thresholds of the General Permits. Implementation and enforcement of these regulations will continue.</p>		2019	In progress, changes of policies, ordinances, and other regulations will take place if deficiencies are observed. (See Attachment K)	Complete a thorough review of stormwater ordinances in 2024.
Construction Site Storm Water Runoff Control	The City will amend relevant procedures to specifically address storm water and erosion control on construction sites. These regulations will incorporate best site-specific management practices described in manuals published by the LDEQ, as well as other sources.	Year One Through Year Five: Inspections of Construction Sites: The City will formalize the periodic inspection of construction sites to ensure the implementation of the best management practices set forth in the ordinances are being adhered to. Integral to this inspection activity will be a procedure for recording all inspections, violations noted, follow up, and enforcement actions needed. This procedure will also be used to respond to information provided by the public.		2019	In progress, inspections of construction sites occur, the city employs an outside firm to provide inspections, however the reports could not be retrieved.	Continue practice. Document reports.

Post Construction Storm Water Management in New Developments and Redevelopment	The City will include in its review of any development the delineated area or areas on the development site to be disturbed by construction activities. City staff will review this information and if found to be greater than one acre, will require an SWPPP be prepared for review.	Year One: Identification of Construction Sites: The City will include in its review of any development the delineated area or areas on the development site to be disturbed by construction activities. City staff will review this information and if found to be greater than one acre, will require an SWPPP be prepared for review.		2019	In progress, developments greater than 1 acre require a SWPPP. Attached are the permitted developments. 6 Commercial developments were permitted in 2023. (See Attachment J)	Continue practice.
Post Construction Storm Water Management in New Developments and Redevelopment	As noted, the City will perform a review of policies, ordinances, and other regulations as they pertain to effective storm water and erosion control on construction sites.	a. Year Two: Review of Policies: The City will complete the review of its planning, zoning, subdivision, and other regulations for effectiveness in controlling post construction discharges into the storm water system. b. Year Two & Three Research: The City will undertake research to identify storm water management techniques that are applicable to the City and which will achieve the State's storm water management standards.	X	2019	Revised. Not started. This BMP is not viable will be replaced with a clear, measurable ordinance review BMP in the new SWMP.	Replace BMP.
Post Construction Storm Water Management in New Developments and Redevelopment	The City has adopted amendments to the Zoning Ordinance and Subdivision Regulations that require all developments disturbing more than one acre of land to meet the State's storm water rules and the conditions of its General Permit.	a. Year Two & Three: Ordinance: The City will continue to draft amendments, to the Zoning Ordinance and Subdivision Regulations that will require all developments disturbing one acre or more of land to implement the identified storm water management techniques to meet the State's Storm Water Rules. b. By Year Three: Adopt Ordinance: The City will adopt the above noted amendments to the Zoning Ordinance and Subdivision	X	2019	Revised. Not started. This BMP is not viable will be replaced with a clear, measurable ordinance review BMP in the new SWMP.	Replace BMP.

		regulations.				
Post Construction Storm Water Management in New Developments and Redevelopment	City staff will conduct one or more site inspections on all developments that require SWPPPs. The staff will be instructed to be on the lookout for evidence that storm water and erosion control measures are either not installed properly or are not being maintained. When such evidence (eroding soils, turbid waters, structural deficiencies, catch basins in need of cleaning, or other readily observable problems) is seen staff will be instructed to notify the City's designated representative.	Year One: Notification of Storm Water and Erosion Problems: The City will begin instructing its staff to be aware of signs of storm water and erosion control problems or evidence of non-compliance with applicable permits. The notification Will continue through the five-year permit period.	X	2019	Revised, In progress, "Perform a final inspection of all qualifying developments to insure they are in compliance with all ordinances concerning Storm Water and Erosion Control before final acceptance of project." The inspection reports could not be retrieved.	Continue practice. Document reports.
Post Construction Storm Water Management in New Developments and Redevelopment	The City will obtain training for their staff in reviewing storm water management plans and understanding and in identifying evidence of non-compliance with general storm water management efforts.	Training: In Year 3 of the planning period the City will have completed full training for staff to enable them to effectively interpret storm water management plans and the State's rules and requirements.		2019	In progress, see training sign-in sheet. 3 Trainings were performed and Public Works Director received MS4 training.(See Attachment I)	Continue annual training
Pollution Prevention/ Good Housekeeping for Municipal Operations	Year One Through Five: The City will implement and maintain compliance with the General Permit throughout the permit period.	Current Practice: The City will continue formal development of standards of operation and maintenance that includes a training component regarding storm water runoff with the goal of preventing or reducing pollutant runoff from public areas.		2019	In progress, see training sign-in sheet. 3 Trainings were performed and Public Works Director received MS4 training.(See Attachment I)	Continue annual training

Pollution Prevention/ Good Housekeeping for Municipal Operations	Year One Through Five: The City will continue its on-going training program for personnel related to storm water management and handling of hazardous materials.	Year Two: Training materials will be developed and made available for the employee training program with the goal of preventing or reducing pollutant runoff from public areas. The program will specifically address the following areas: a. Maintenance activities, maintenance schedules, and long-term inspection procedures for controlling and reducing pollutants b. Controls for reducing or eliminating the discharge of pollutants from streets, roads, highways, municipal parking lots, maintenance, and storage yards, etc. as outlined in the General Permit. c. Procedures for proper disposal of waste removed through municipal operations including dredged spoil, accumulated sediments, floatables, and other debris.		2019	In progress, see training sign-in sheet. 3 Trainings were performed and Public Works Director received MS4 training.(See Attachment I)	Review the viability of this BMP and determine if feasible.
---	--	--	--	------	--	---

Explanation for Section B: SWMP Modifications and Additional Information:

The changes made to the SWMP were shown as revised in section C. Stormwater Management Program Status.

Note: If you have developed a stormwater ordinance during the last reporting period, include a description or citation of the ordinance, or simply attach a copy of the ordinance.

D. Certification

I certify under penalty of law that this document and all attachments were prepared under my direction or supervision in accordance with a system designed to assure that qualified personnel properly gather and evaluate the information submitted. Based on my inquiry of the person or persons who manage the system, or those persons directly responsible for gathering the information, the information submitted is, to the best of my knowledge and belief, true, accurate, and complete. I am aware that there are significant penalties for submitting false information, including the possibility of fine and imprisonment for knowing violations.



Signature

Date 5-9-24

Chris Gautreaux

Name (printed)

Public works Director

Title

Attachment A

Stormwater Brochure

Stormwater: Where It Flows, Everything Goes

When it rains, snows, or sleet, water hits hard surfaces and takes anything on that surface with it, through drains, pipes, and ditches to local rivers, lakes, and streams.



Where Stormwater Flows, Everything Goes

www.cityofabbeyville.net



Attachment B

Environmental Education Page

<https://cityofabbeville.net/city-departments/> - Public works

WHAT IS STORMWATER?

Stormwater is the water that originated from rain. Stormwater that does not soak into the ground becomes surface runoff. Surface runoff flows into surface waterways or storm drains which eventually discharge into surface waters.

Stormwater Pollution

Stormwater pollution is a significant concern as it involves the transportation of pollutants from various sources into our local water bodies. When stormwater flows over the land, it can collect debris, chemicals, dirt, and other contaminants. This polluted water enters storm drains, which lead directly to rivers, lakes, and coastal waters without any treatment. Consequently, the water used for swimming, fishing, and drinking becomes compromised. It's crucial to prevent hazardous materials like paints, cleaners, and motor oil from entering the storm sewer system through proper disposal. Additionally, avoiding the blowing of grass cuttings into the streets and using mulching mowers can help maintain proper drainage and water quality. To prevent soil erosion and sedimentation in our waterways, employing measures like silt fencing, berms, or strategically placed hay bales is essential.

The Effects of Pollution

Polluted stormwater runoff can have many adverse effects on plants, fish, animals and people.

What Can You Do?

Report a problem. If you witness dumping,

- ✓ littering, or improper erosion control at construction sites, let us know.
- ✓ Be a responsible homeowner:
 - Keep litter, pet wastes, leaves, and debris out of street gutters and storm drains.
 - Apply lawn and garden chemicals sparingly and according to directions.
 - Dispose of used oil, antifreeze, paints, and other household chemicals properly—not in storm sewers or drains.
 - Clean up spilled brake fluid, oil, grease and antifreeze. Do not hose them into the street where they can eventually reach local streams and lakes.
 - Control soil erosion on your property by planting ground cover and stabilizing erosion-prone areas.
 - Have your septic system inspected and pumped at least every three to five years so that it operates properly.
 - Purchase household detergents and low-phosphorous cleaners to reduce the amount of nutrients discharged into our lakes, streams, and coastal waters.
 - Learn more at: https://www3.epa.gov/npdes/pubs/solution_to_pollution.pdf

Please check out the LDEQ's video describing the "**New Vision**" approach. Please share it with anyone concerned with water quality in Louisiana and elsewhere. Additionally, please check out the LDEQ's video on **how to maintain your home sewage system**. This video was created to support our "New Vision" activities.

STORMWATER POLLUTION PREVENTION PLAN

Attachment C

Hazardous Waste Pickup Day Promotion



City of Abbeville, Louisiana - City Hall

October 10, 2023 · 🌐

...

🗳️🗳️ Oct 14th: It's not just Election Day, it's also "Vote for a Clean Conscience" Day! 🗳️✅

Exercise your civic duty at the polls and then exercise your responsible disposal skills with hazardous waste. Double the action, double the impact! 🌍♻️

ATTENTION ALLVERMILION PARISH RESIDENTS

HOUSEHOLD HAZARDOUS WASTE COLLECTION DAY

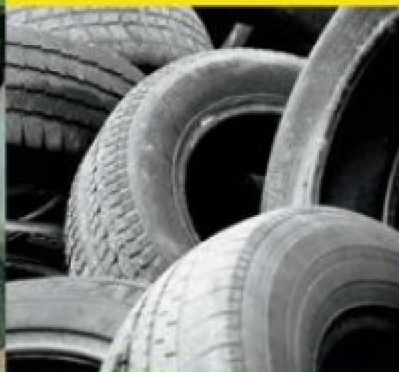
HOUSEHOLD HAZARDOUS WASTE

- Oil based paint only - NO LATEX
- Pesticides / Herbicides
- Fuels / Oils
- Cleaning supplies
- Sharps
- No explosives or smoke detectors



TIRES NO RIMS ALLOWED!

- Cars/trucks
- Ag tires under 72"
- Motorcycle
- No off road tires



**SATURDAY,
OCT 14TH
8AM-1PM**

**8500 BIRCH RD
ABBEVILLE, LA**





Keep Abbeville Beautiful

October 10, 2023 · 🌐

🌿🌍 Household Hazardous Waste Collection Day 🌍🌿

Hey Abbeville and Vermilion Parish residents! 🏡 Do you have household chemicals that you're not sure how to dispose of safely? What about some old tires laying around? Vermilion Parish Police Jury has you covered! 🛡️

📅 **Date: October 14th**

🕒 **Time: 8am -1pm**

📍 **Location: Vermilion Parish Solid Waste Plant
8500 Birch Rd, Abbeville, LA 70510**

This is your chance to responsibly get rid of household chemicals that can be dangerous if disposed of improperly and those old tires and batteries. Household Hazardous Waste Day is open to all residents of Abbeville and Vermilion Parish, so bring your identification showing residency and let's do our part to keep Lafayette Safe & Clean! ☀️

💡 Why is proper disposal important? 💡

Improper disposal of household chemicals can have serious consequences. It can:

- 🚫 Threaten our health
- 🌍 Contaminate our land, air, and water supplies
- 😷 Cause injury to the staff collecting our garbage

Some common household products like paints, petroleum-based items, poisons, cleaners, and batteries contain hazardous ingredients. They need special care when you dispose of them because they can catch fire, react, or even explode under certain circumstances. 🧨

❌ Please, do not resort to improper disposal methods like pouring them down toilets or sinks, dumping them on the ground, or tossing them in with your regular trash. These actions not only harm the environment by contaminating surface and groundwater but also pose a significant threat to human health.

[#Abbeville](#) [#ILoveAbbeville](#) [#KeepAbbevilleBeautiful](#) [#KeepLouisianaBeautiful](#)

Let's make a positive impact together! Join us on Oct 14th to safely dispose of your household hazardous waste and contribute to a cleaner, safer Vermilion Parish.

💚 Spread the word, share this post, and let's protect our community! Full flyer can be found in the comment section below. [#Abbeville](#) [#ILoveAbbeville](#) [#VermilionParish](#)
[#HouseholdHazardousWaste](#) [#SafetyFirst](#)

Attachment D

Citizen Complaint Hotline



CITY OF ABBEVILLE

REPORT AN ISSUE

I'd Like to Report:

Code Violations



CODE VIOLATIONS

Name

First

Last

Phone

Email

Address of Violation *(Required)*

Street Address

Address Line 2

City



State

ZIP Code

Complaint/Issue *(Required)*

Complaint Log

Name	Email	Phone	Address	Complaint
Patty Slatten	psla10@yahoo.com	(808) 555-0188	1209 Morgan St	1209 Morgan St has city ditches and parish ditch between property and adjacent property. I have to constantly call the city to come weed eat or spray ditches
Scott Hargrave		(451) 555-0145	522 Berthier Street	A pipe under the road busted
Laurie Hebert	mira@example.com	(201) 555-0121	800 S Jefferson St	Need someone to come to my home and teun off the water so a busted pipe can be repaired.
Meaux Darlene			1610 Prairie Ave	I've contacted my landlord about the leak but they haven't checked about it. I sometimes think I smell a sewage smell. There is always a puddle of water on the walkway to the house. the grass area between the driveway and walkway is wet. I'm contacting you in case this is a problem the city can see about.

Attachment E

Community Clean-up Day



City of Abbeville, Louisiana - City Hall

October 13, 2023 · 🌐

🌟 #FeatureFriday Spotlight: Nikia Leblanc - Making a Difference in Abbeville 🌟

This week, we're thrilled to introduce you to Nikia Leblanc a dedicated community leader and the Director of [The Vermilion Reach Group](#). Nikia's passion for giving back to her community shines brightly, and today, we're putting the spotlight on her incredible work!

📖 Nikia Leblanc is not only the Director of The Vermilion Reach Group, but she's also the proud owner of [The Math Depot](#). At The Math Depot, they understand the challenges of balancing work, family, and school. Nikia and her team are here to help you and your child(ren) navigate the journey of education while having fun and accomplishing fitness goals!

🌍 Community Clean-Up Day: October 28, 2023

Nikia Leblanc and The Math Depot are on a mission to bring the community together. They are reaching out to community leaders, businesses, churches, politicians, organizations - anyone ready to roll up their sleeves and make a difference! Mark your calendars, because there's an exciting event coming up! The Math Depot, along with its sponsors, cordially invites you to the upcoming Community Clean-Up Day on October 28th, 2023, from 8:30 am to 12 noon. But here's the best part - it's not just for adults! Parents, if your children need service hours, this is the perfect opportunity for them to give back to the community and earn those hours with a smile!

👉 Don't miss out on this incredible opportunity to make a real difference in our community. Save the date, rally your friends and family, and let's turn October 28th into a day of positive change! Let's come together, bring positive change to our community, and create a brighter future for Abbeville. 🌟

#Abbeville #ILoveAbbeville #KeepAbbevilleBeautiful #CommunityPride #AbbevilleStrong #TogetherWeCan



Community Clean up October 28, 2023
120 Tires
10 Tons of Trash



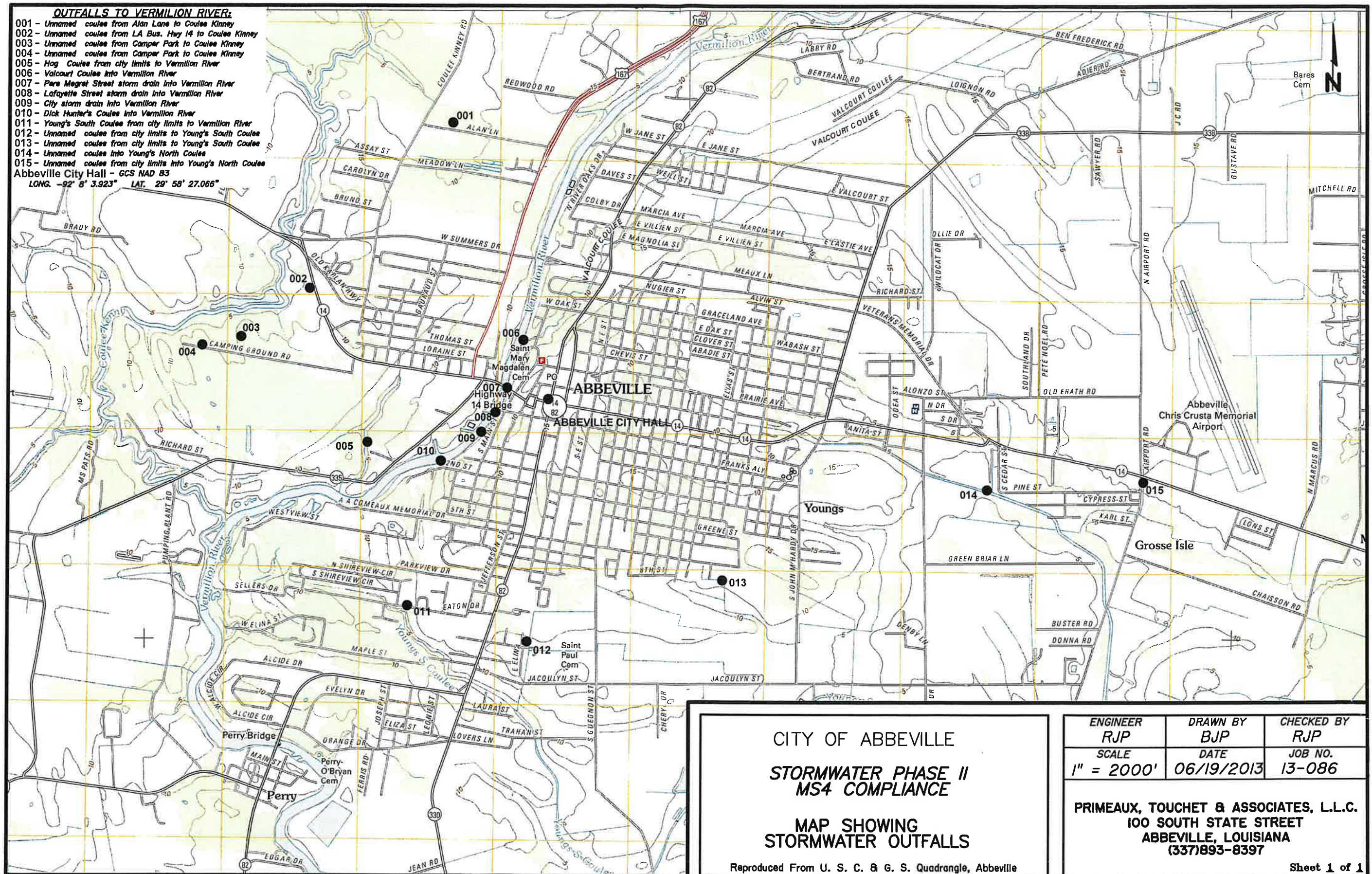


Community Clean up October 28, 2023
120 Tires
10 Tons of Trash



Attachment F

Outfalls Map



Attachment G

Sanitary Sewer System Repairs

City of Abbeville Repairs of Leaks Detected During Smoke Testing in 2022					
Inspection Date	Location Number	Address Number	Address Street	Action Date	Action Performed
8/29/2022	4	901	W. St. Mary St.	10/25/2023	Service line point repair
8/29/2022	8	800	W. St. Mary St.	10/25/2023	No leak found
8/29/2022	12	702	W. St. Mary St.	10/25/2023	No Repair
8/29/2022	21	110	W. St. Mary St.	10/25/2023	No Repair
8/29/2022	24	1003	St. Mary St.	10/26/2023	Service line point repair
8/29/2022	25	1002	St. Paul St.	10/27/2023	Service line point repair
8/29/2022	28	905	W. St. Mary St.	10/27/2023	Replace service line
8/29/2022	34	810	W. St. Paul St.	10/27/2023	No Repair
8/29/2022	40	800	St. Paul St.	10/27/2023	Replaced Cleanout
8/29/2022	48	408	W. St. Paul St.	10/25/2022	No Repair
8/30/2022	18	600	W. St. Mary St.	10/25/2023	Service line point repair
9/7/2022	3	806	S. Guegnon	10/30/2023	Gate locked
9/12/2022	36	702	Green St.	10/30/2023	No Repair
9/12/2022	43	702	Schlessinger St.	10/30/2023	No Repair
9/12/2022	51	807	S. Lamar St.	10/30/2023	Plugged abandoned service line
9/12/2022	65	720	S. Bailey St.	10/30/2023	Replaced Cleanout
9/12/2022	68	808	S. Young St.	10/30/2023	No Repair
9/13/2022	73	804	S. Young St.	10/30/2023	No Repair
9/13/2022	77	711	S. Young St.	10/30/2023	Service line point repair

Sample Report

6-leaks

6-leaks Repaired
5 leaks Not Repaired

CITY OF ABBEVILLE SMOKE SURVEY FINDINGS SUMMARY AREA #1 - ST. MARY ST. - ST. PAUL ST.

Repaired

Repaired

Repaired

Repaired

Repaired

Repaired

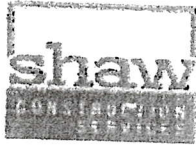
INSPECTION DATE	LOCATION NUMBER	ADDRESS NUMBER	ADDRESS STREET	NAMES
8/29/22	10/25 #4	904	W. ST. MARY ST.	LANA RICHARD
8/29/22	10/25 #8	800	W. ST. MARY ST.	VELTIE LEBOUF
8/29/22	10/25 #12	702	W. ST. MARY ST.	KIM BOUDREAUX
8/30/22	10/25 #18	600	W. ST. MARY ST.	TU ANH DUONG
8/29/22	10/25 #21	110	W. ST. MARY ST.	MERRICK BROUSSARD
8/29/22	10/26 #24	1003	ST. MARY ST.	RUBY F. SHERMAN
8/29/22	10/27 #25	1002	ST. PAUL ST.	ALINE HARGRAVE
8/29/22	10/28 #28	905	W. ST. MARY ST.	JACE E. LEWIS
8/29/22	10/27 #34	810	W. ST. PAUL ST.	VICTORIA GERARD
8/29/22	10/27 #40	800	ST. PAUL ST.	VAN MAI TRUOC
8/29/22	10/25 #48	408	W. ST. PAUL ST.	DONNA PRIMEAUX

10/25/23

Leak #4 Found 2 leaks on Prop. 1-on service line
1-where service tie to city service.

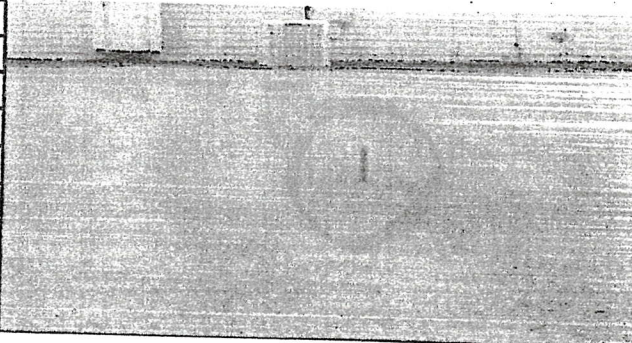
Paid 2#21 service line Point Repair

Paid 2#25 Excavated back Fill 0'-5'



City of Abbeville
F.Y. 2021 SEWER SYSTEM REHABILITATION
FIELD INSPECTION TEST FORM

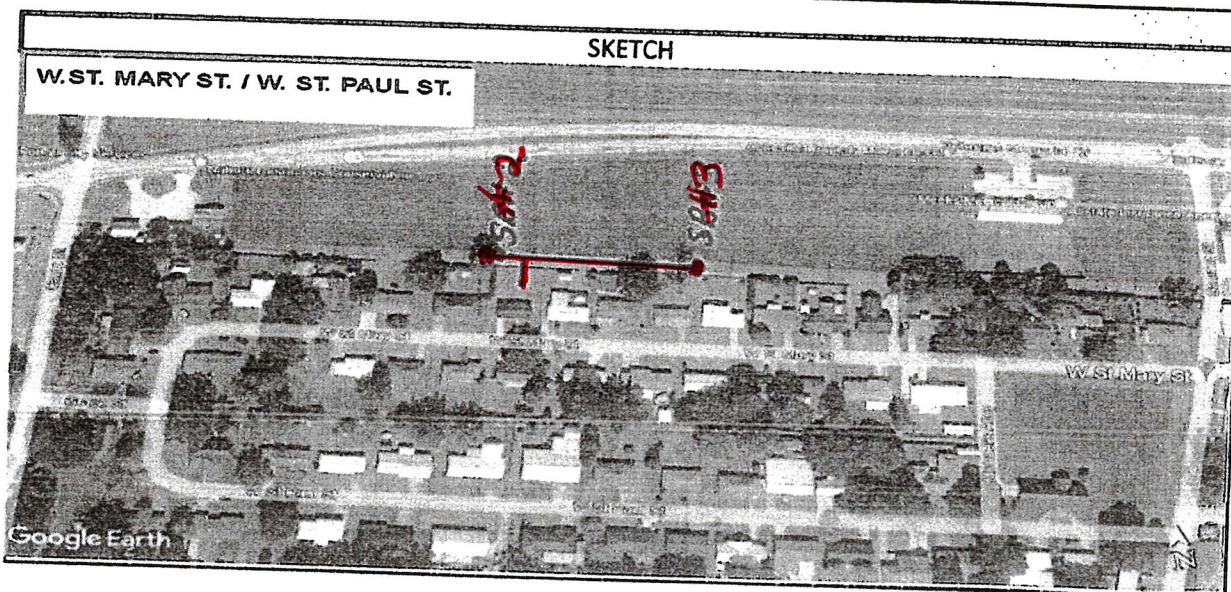
DATE:	8/29/2022
CONTRACTOR:	SHAW CONSTRUCTION
COMPANY REP:	BRETT RODRIGUE
STREET NAME:	W. ST. MARY .ST
MANHOLE NUMBER AT BLOWER:	SSMH-SB # 2
MANHOLE NUMBER AT END OF REACH:	SSMH - SB # 3
LINEAR FEET OF REACH:	298 LF



LEAK RECORD						
LEAK#	ML OR SL	PUBLIC OR PRIVATE PROPERTY	STREET ADDRESS	DISTANCE FROM MANHOLE	OFFSET DISTANCE	LEAK TYPE
# 4	SL	PRIVATE PROPERTY	904 W. ST. MARY ST.	43 LF	2 LF	GSL

COMMENTS:	GROUND LEAK ALONG THE SERVICE LINE
-----------	------------------------------------

LEAK TYPES	
COPM	CLEAN OUT MISSING
COPL	CLEAN OUT PLUG BROKEN
RD	ROOF DRAIN CONNECTED TO SEWER
SD	SURFACE DRAIN CONNECTED TO SEWER
O	OTHER (DESCRIBE IN COMMENTS)
CON	LEAKING AT CONNECTION BETWEEN THE HOUSE AND SERVICE
GSL	GROUND LEAK ALONG SERVICE LINE RUN



Attachment H

Sucre Circle Drainage Clean-up



















Attachment I

Training Sign-In Sheets

Stormwater Minimum Control Measurement Training Record

[illegible]



THIS CERTIFIES THAT

CHRIS GAUTREAUX, MS4-SCP

HAS SUCCESSFULLY COMPLETED THE TRAINING
REQUIREMENTS AND IS HEREBY RECOGNIZED AS A:

**QUALIFIED MS4 STORMWATER
COMPLIANCE PROFESSIONAL**

The person identified above has been awarded 1.4 CEU'S

J. Fred Heitman, Lead Instructor

Qualification Date
June 14, 2023

Qualification Expires
June 14, 2026

Qualification Number
2224

Training Log

Date	Material Covered	Instructor
3/22/2023		Chris Gautreaux
6/21/2023		Chris Gautreaux
11/14/2023	Tires and Catch Basins	Chris Gautreaux

Attachment J

Building Permits

CHECKLIST FOR COMMERCIAL CONSTRUCTION WITHOUT KITCHEN PERMIT APPLICATION

PERMITS/LICENSES INCLUDED IN PACKET

- ☐ **BUILDING PERMIT PACKET** – if new building, renovating building, or adding to building
 - ☐ **Erosion/Sediment Control Application** – if necessary
 - ☐ Landscaping Application - required
 - ☐ Tree Removal Application - if necessary
 - ☐ Grease Trap/Fixtures Application – serving food only
- ☐ **SIGN PERMIT APPLICATION** - required
- ☐ **OCCUPATIONAL LICENSE APPLICATION** - required

REQUIRED FOR BUILDING PERMIT

BEFORE PERMIT CAN BE ISSUED

- ☐ Turn in completed City of Abbeville Residential Building Permit Application
- ☐ Address of construction
- ☐ Turn in construction drawings required for City of Abbeville Permits Dept **AND** State Fire Marshal (800-554-0006)
 - ☐ electrical service plan/floor plan
 - ☐ plumbing layout
 - ☐ site plan
 - ☐ foundation plan
 - ☐ drainage plan
 - ☐ utility service connections –
 - ☐ grease trap application and drawings
 - ☐ roof runoff pattern -
 - ☐ landscape application -
 - ☐ tree removal application – if applicable
 - ☐ sediment/erosion application – if applicable
- ☐ Letter from manufacturer stating compliance – Modular Building Only
- ☐ Letter from engineer stating compliance – Movable Building Only
- ☐ Plat of property
- ☐ State Contractor's License
- ☐ Preliminary Elevation Certificate – if in flood zone
- ☐ LADOTD Project Permit – if on state highway (337-893-5523)
- ☐ Payment of Permit – determined by cost of project

AFTER PERMIT IS ISSUED – BEFORE UTILITIES CAN BE ISSUED

- ☐ **Complete Culvert Permit** – if necessary
- ☐ Complete Electrical Permit (licensed electrician) – temp pole if necessary, for construction
 - ☐ call City of Abbeville Permits Dept for Temp Pole only (337-898-4212 or 337-898-4213)
- ☐ Complete Water/Sewer Permit (licensed plumber)
- ☐ Inspections of progress on construction – Primeaux and Associates (337-893-8397)
 - Owner is responsible to call for inspections for each stage of construction
 - ☐ Foundation Inspection
 - ☐ Open-Wall Inspection
 - ☐ Roof Inspection
 - ☐ Water Shut Off Valve Inspection
 - ☐ Sewer Cleanout Inspection
 - ☐ Mechanical Inspection (Fuel/Gas)
 - ☐ Final Inspection
- ☐ Final Elevation Certificate – If in a flood zone

AFTER ALL INSPECTIONS ARE COMPLETE – UPON COMPLETION OF CONSTRUCTION

- ☐ Final Electricity
- ☐ Final Water/Sewer
- ☐ Certificate of Occupancy

REQUIRED FOR SIGN PERMIT

- ☐ Complete Application with Permit Department
- ☐ Submit plans, drawn to scale with dimensions, including the following:
 - ☐ Details indicating proposed sign area, dimensions, colors, materials, graphic illustration and methods of illumination and attachment.
 - ☐ A site plan indication of the location of all existing and proposed signs.
 - ☐ Building elevations with the proposed sign depicted.
 - ☐ Photographs of the proposed sign location and the existing signs.
- ☐ Pay for permit once sign application has been approved.

REQUIRED FOR OCCUPATIONAL LICENSE

- ☐ Complete Application with Permit Department
- ☐ Submit requirements as stated on back side of Occupational License Application – varied on type of business opening
- ☐ Complete Sales Tax paperwork and return to VPSB Sales Tax Office (337-898-5732)

CITY OF ABBEVILLE
EROSION/SEDIMENT CONTROL PLAN
APPLICATION



OWNER OR DEVELOPERS NAME: _____

ADDRESS: _____

CONSULTING FIRM'S NAME: _____

ADDRESS: _____

CONTACT PERSON: _____

EROSION & SEDIMENT CONTROL PLAN: _____

FILING FEE: **\$50.00**

I, the undersigned, hereby certify that the submitted Erosion & Sediment Control Plan does comply with the City of Abbeville's Ordinance (Sec. 15-200 thru 15-218)

Electronic Signature Agreement

I understand and agree that my application will be signed electronically when I type my name in the signature box **AND** select the check box below. I also understand that my electronic signature means that I intend to apply for this permit/application and have provided the City of Abbeville with accurate information.

I understand that under penalty of perjury that I have examined all the information on this application, and it is true and correct to the best of my knowledge. I understand that anyone who knowingly gives a false or misleading statement about a material fact in this electronic application, or causes someone else to do so, commits a crime and may be sent to prison or may face other penalties, or both.

Signature

Date

☐ **I have read and agree with the statements above.**

13:54:38 4/30/24

CITY OF ARDENVILLE
BUILDING PERMITS BY TYPE REPORT FOR 1/01/23 TO 12/31/23

PER105 PAGE 4

PERMIT NAME	ADDRESS	PERMIT DATE	AMT	PERMIT FEE	DESCRIPTION	PHONE	SHEET
10000 GENE SELLERS JR	1105 W FORT ST	3/09/23	0	1,350.00	COMMERCIAL/NEW CONSTRUCTI		A
10004 GUNSEY DEVELOPMENT COMPANIES LLC	2207 VETERANS MEN DR	3/20/23	300,000	2,305.00	COMMERCIAL/NEW CONSTRUCTI	504-250-4955	B
10000 R4D ARCHITECTURE	2411 CHARITY ST	4/12/23	1,250,000	2,955.00	COMMERCIAL/NEW CONSTRUCTI	337-398-6130	B
10125 PEREK NGUYEN	1201 NORTH LAFITTE	8/23/23	2,269,808	3,775.00	COMMERCIAL/NEW CONSTRUCTI	337-783-7422	B
10130 ERIN SCHULT	1103 VET MEN DR	9/07/23	75,000	1,030.00	COMMERCIAL/NEW CONSTRUCTI	337-207-8024	B
10154 KATIE GETZ	2207 VET MEN DR	11/17/23	425,000	1,380.00	COMMERCIAL/NEW CONSTRUCTI	608-407-9078	B
PERMITS THIS TYPE	4		4,819,808.00	12,795.00			

Attachment K

Ordinance on Stormwater, Erosion, and Sediment Control; Demolition; Landscape

Stormwater, Erosion, and Sediment Control

https://library.municode.com/la/abbeville/codes/code_of_ordinances?nodeId=PTIITHCOOR_CH15SEDR_ARTIVSTERSECO

Demolition

https://library.municode.com/la/abbeville/codes/code_of_ordinances?nodeId=PTIITHCOOR_CH5BU_ARTIVDEBU

Landscape

https://library.municode.com/la/abbeville/codes/code_of_ordinances?nodeId=PTIITHCOOR_CH5BU_ARTVIIIILA